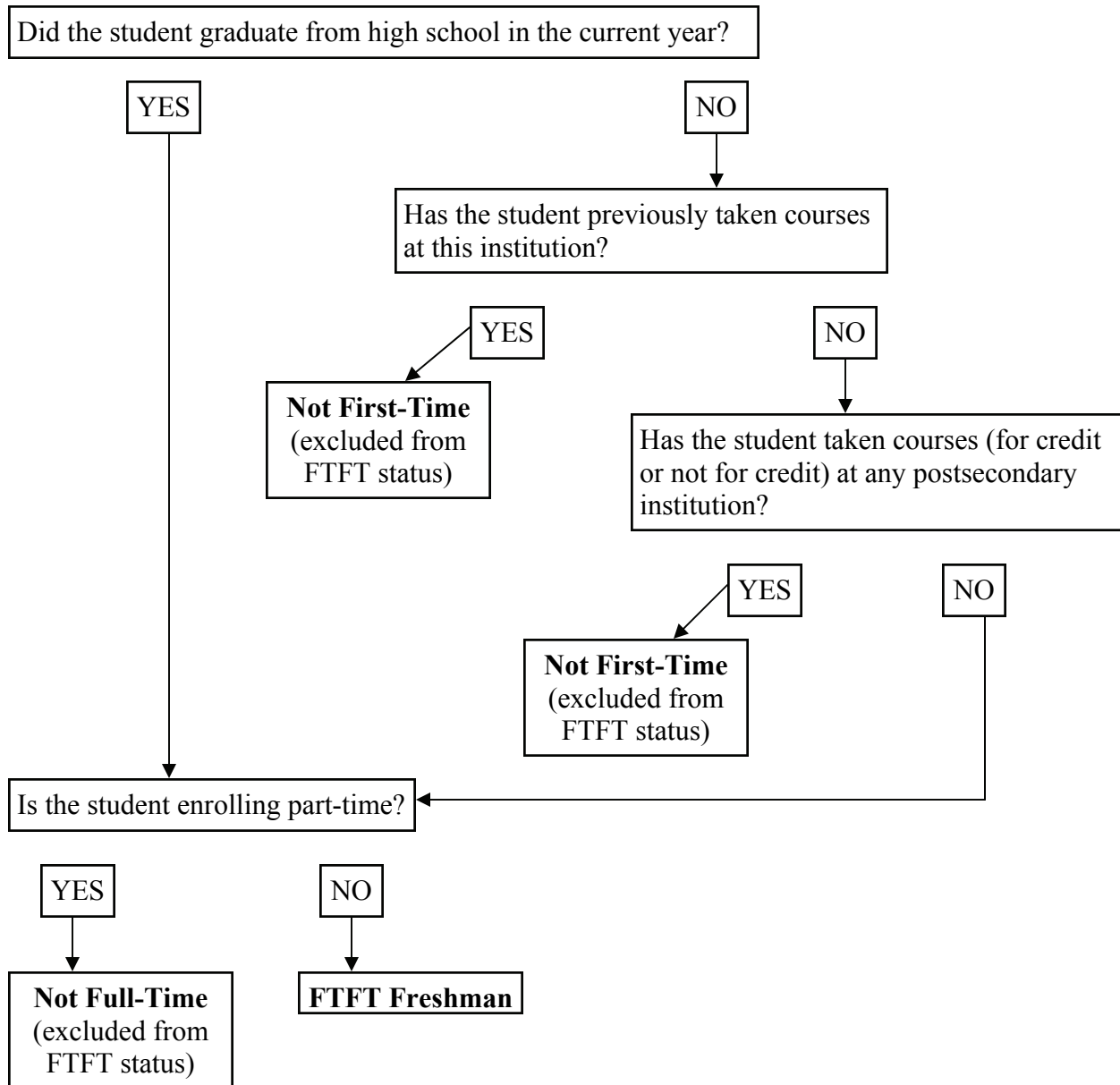




### DETERMINING FIRST-TIME FULL-TIME STATUS

The determination of whether or not a CIRP Freshman Survey respondent is considered a first-time full-time (FTFT) freshman consists of four conditions detailed in the flowchart below.



*Note:* Survey respondents with missing data at any stage in the FTFT determination process (year graduated from high school, previous credit at this institution, previous credit at another institution, enrollment status) and whose responses do not otherwise exclude them are assumed to have FTFT status.