



POLITICAL ENGAGEMENT in the first year of college

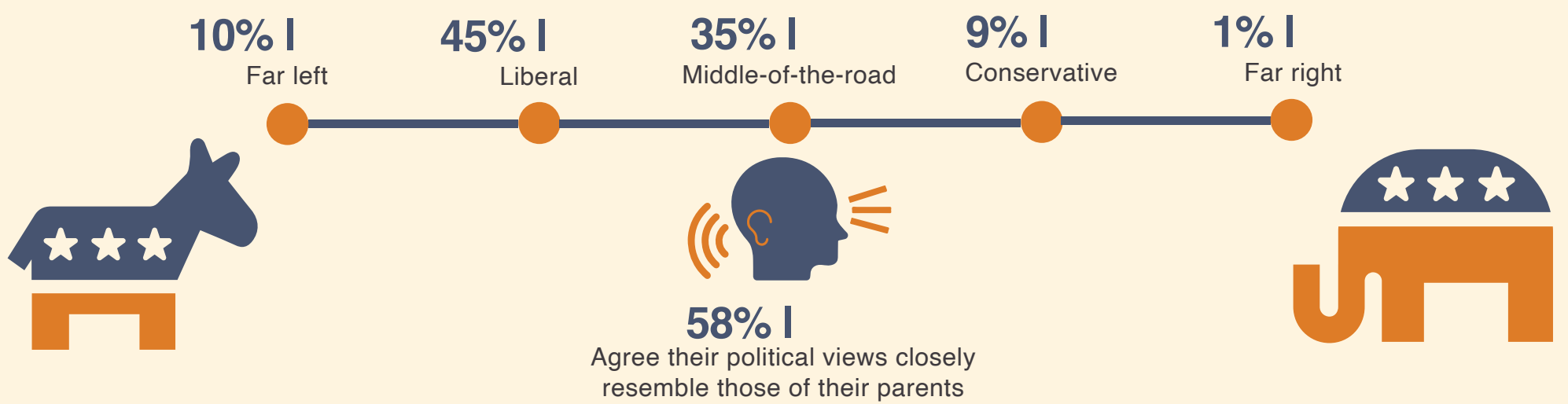
2020 YFCY

HERI results are shown in NAVY |

results are shown in BLACK

As the next generation of voters, leaders, and decision-makers of our society, it is pertinent to discuss the political affiliations of our students, their involvement in political affairs, and their perspectives on diverse backgrounds, particularly with 2020 being a presidential election year.

First-year students' political views tend to closely resemble those of their parents, with the majority leaning left.



Most first-year students view their ability to understand diverse perspectives and backgrounds as a major strength...

68% | Ability to discuss and negotiate controversial issues



69% | Openness to having their views challenged



78% | Tolerance of others with different beliefs



79% | Ability to see the world from others' perspectives



86% | Ability to work cooperatively with diverse people

...And many students deem it a very important or essential goal to be politically involved.



31% | Influencing the political structure



76% | Are registered to vote

48% | Keeping up to date with political affairs



77% | Have discussed politics

However, very few first-year students have yet to be politically engaged.

37% | Have voted in a national, state, or local election



37% | Have publicly communicated their opinion about a cause

22% | Have demonstrated for a cause



21% | Have helped raise money for a cause or campaign

8% | Have worked on a political campaign etc.



HERI

With insight from HERI's Your First College Year Survey, the most comprehensive tool addressing first-year programming and retention strategies, you'll be one step closer to helping your students adjust to campus life while providing the best environment for learning.

Survey Source: Your First College Year Survey 2020
www.heri.ucla.edu/infographic/
© 2022 Regents of the University of California

facebook.com/HERI.CIRP
linkedin.com/company/heriucla/

@HERIUCLA
@HERIUCLA