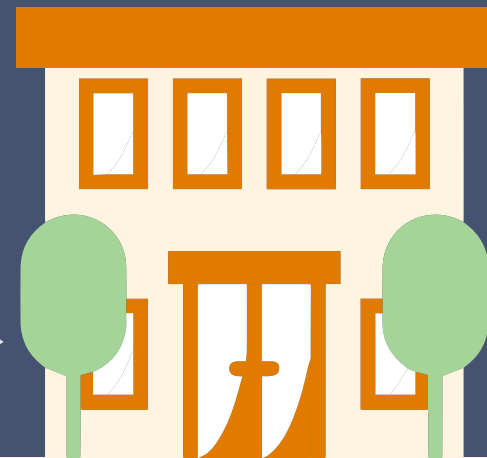


Journey Through the First Year of College



National results are shown in NAVY & WHITE |

results are shown in GRAY

Developed by the Higher Education Research Institute (HERI) and the Policy Center on the First Year of College in 2000, the Your First College Year survey (YFCY) is administered annually through the Cooperative Institutional Research Program (CIRP) at the University of California, Los Angeles. The YFCY was the first national survey designed specifically to measure student development in the first year of college, and it is distributed to students at the end of their first year. Twenty-three institutions participated in the 19th administration of the YFCY in the Spring of 2018. The sample consists of 5,204 first-time, full-time students at these institutions.

AT THE END OF THE FIRST YEAR, STUDENTS ARE SATISFIED WITH ACADEMIC LIFE ON CAMPUS...

73% |

are satisfied with general education and core curriculum courses

79% |

are satisfied with their overall academic experience

86% |

would recommend their college to others



...AND HAVE UTILIZED A VARIETY OF STUDENT SERVICES.



54% |

used student health services

25% |

used student psychological services

29% |

used campus safety services

15% |

used the disability resource center

43% |

used study skills advising

47% |

used the writing center

36% |

used financial aid advising

THEY HAVE NUMEROUS DEMANDS ON THEIR TIME OUTSIDE OF CLASS...



34% |

felt their job responsibilities interfered with schoolwork



35% |

felt their family responsibilities interfered with schoolwork



13% |

spent three or more hours per week commuting

... BUT FIND WAYS TO UNWIND.



64% |

spent three or more hours per week watching TV/online video content



45% |

pray or meditate



58% |

spent three or more hours per week exercising or playing sports

MANY STUDENTS ARE THINKING ABOUT THEIR CAREERS...



59% |

strongly agree that it is important to think about their career path after college



24% |

strongly agree that they have a clear idea of how to achieve their career goals



42% |

used career services



19% |

are very satisfied with the relevance of coursework to their future career plans



36% |

decided to pursue a different major



34% |

changed their career choice

...AND SOME ARE NOW EXPLORING NEW GOALS.



With insight from HERI's Your First College Year Survey, the most comprehensive tool addressing first-year programming and retention strategies, you'll be one step closer to helping your students adjust to campus life while providing the best environment for learning.

Survey Source: Your First College Year Survey 2018
www.heri.ucla.edu/infographic/

[facebook.com/HERI.CIRP](https://www.facebook.com/HERI.CIRP)
[linkedin.com/company/heriucla/](https://www.linkedin.com/company/heriucla/)

[@HERIUCLA](https://www.instagram.com/HERIUCLA)
[@HERIUCLA](https://www.twitter.com/HERIUCLA)