

ADJUSTING TO COLLEGE

CAN BE TRICKY

Approximately 50% of respondents said that if given the choice, they would still choose to enroll at their current college, while 34% were undecided. The items below provide us with a look into how first-year students acclimate to their new school.

FIRST-YEAR STUDENTS ARE WORRIED ABOUT SAFETY ON CAMPUS



24%
Felt unsafe on campus



25%
Believe sexual violence is prevalent on campus



23%
Are not aware of their college's harassment/assault reporting policy

WHILE COLLEGES TOOK STEPS TO EASE STUDENTS' TRANSITION TO COLLEGE,



30%
Participated in a common book or summer reading program



51%
Took a course or first-year seminar designed to help students adjust to college life

FYE

54%
Were satisfied with first-year programs



63%
Were satisfied with their orientation

MANY STUDENTS STILL HAD DIFFICULTY ADJUSTING.



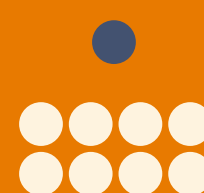
47%
Found it difficult to manage time effectively



36%
Had difficulty developing effective study skills



47%
Frequently felt overwhelmed by all they had to do

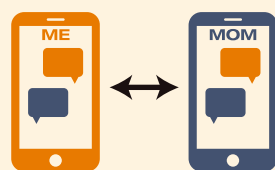


57%
Felt isolated from campus life

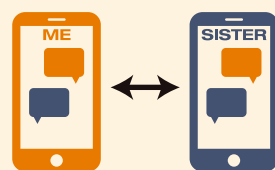


71%
Felt lonely or homesick

WHILE SOME STUDENTS MAINTAINED CONTACT WITH THEIR FAMILIES AND COMMUNITIES BACK HOME....



36%
Interacted with parents or guardians daily



24%
Interacted with siblings or extended family daily



20%
Frequently went home for the weekend



29%
Contributed money to help support their family

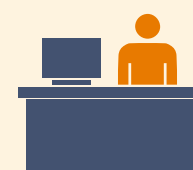


34%
Felt their family responsibilities interfered with schoolwork

MOST FIRST-YEAR STUDENTS ESTABLISHED CONNECTIONS AT THEIR NEW SCHOOL.



86%
Felt that faculty empowered them to learn



85%
Agreed that at least one staff member took an interest in their development



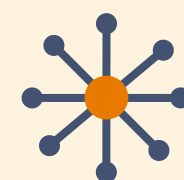
72%
Found it easy to develop close friendships with other students



75%
Interacted with close friends at their school daily



73%
Received advice/counseling from another student



66%
Are satisfied with the overall sense of community among students



The more you know about your students, the better you can understand their needs. With insight from CIRP's Your First College Year Survey, the most comprehensive tool addressing first-year programming and persistence, you'll be one step closer to providing the best environment for student learning and adjustment to college.

Survey Source: CIRP Your First College Year Survey 2016

www.heri.ucla.edu

facebook.com/HERI.CIRP

[@HERIUCLA](https://twitter.com/HERIUCLA)