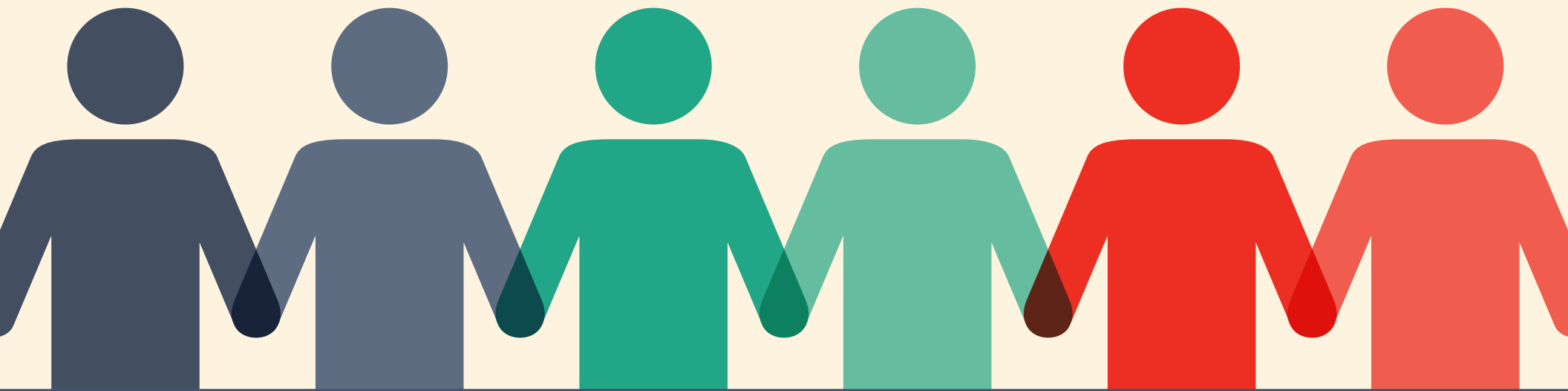
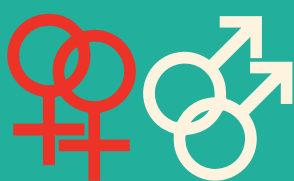


A PLACE TO BELONG



Higher education institutions provide an environment for students to expand their viewpoints and find their place in our diverse society. A culture of inclusion on campus ensures all students are able to grow and learn successfully.

College is a time for students to reflect on who they are...



17%

Often think about their sexual orientation



26%

Often think about their gender



36%

Often think about their socioeconomic status



51%

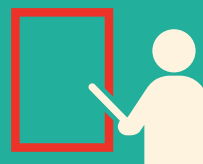
Recognize their own biases

...And to engage others on important issues.



31%

Challenge others on issues of discrimination



38%

Make an effort to educate others about social issues



41%

Frequently discuss sexism, gender differences, or gender equality

Campus leaders can provide sources of support for diversity...



75%

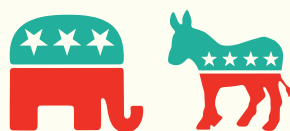
Believe administrators speak about the value of diversity



45%

Are satisfied with administrative response to incidents of discrimination

...While striving to foster inclusive environments.



52%

Are satisfied with the atmosphere for political differences



61%

Are satisfied with respect for diverse beliefs



58%

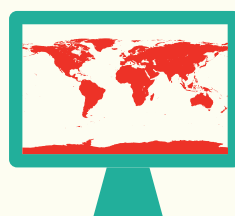
Are satisfied with the atmosphere for differences in sexual orientation



25%

Feel their campus has a lot of racial tension

Diversity courses and centers offer spaces for students to learn...



21%

Took an ethnic studies course



68%

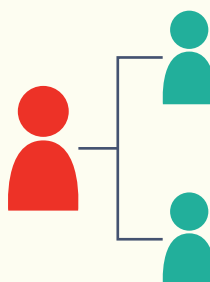
Had a course with readings on class differences



29%

Participated in racial/ethnic or cultural center activities

...Which may inspire students' long-term goals of becoming engaged community leaders.



43%

Want to become a community leader



63%

Want to promote racial understanding



48%

Want to participate in a community action program



Understanding the connections between institutions, faculty, staff, and students provides the information needed to promote change. With insight from the Diverse Learning Environments Survey you'll be one step closer to creating the campus climate necessary for student success.

Survey Source: CIRP Diverse Learning Environments Survey 2016

www.heri.ucla.edu

[facebook.com/HERI.CIRP](https://www.facebook.com/HERI.CIRP)

[@HERIUCLA](https://twitter.com/HERIUCLA)