

FOCUSED ON THE FUTURE

National results are shown in NAVY |

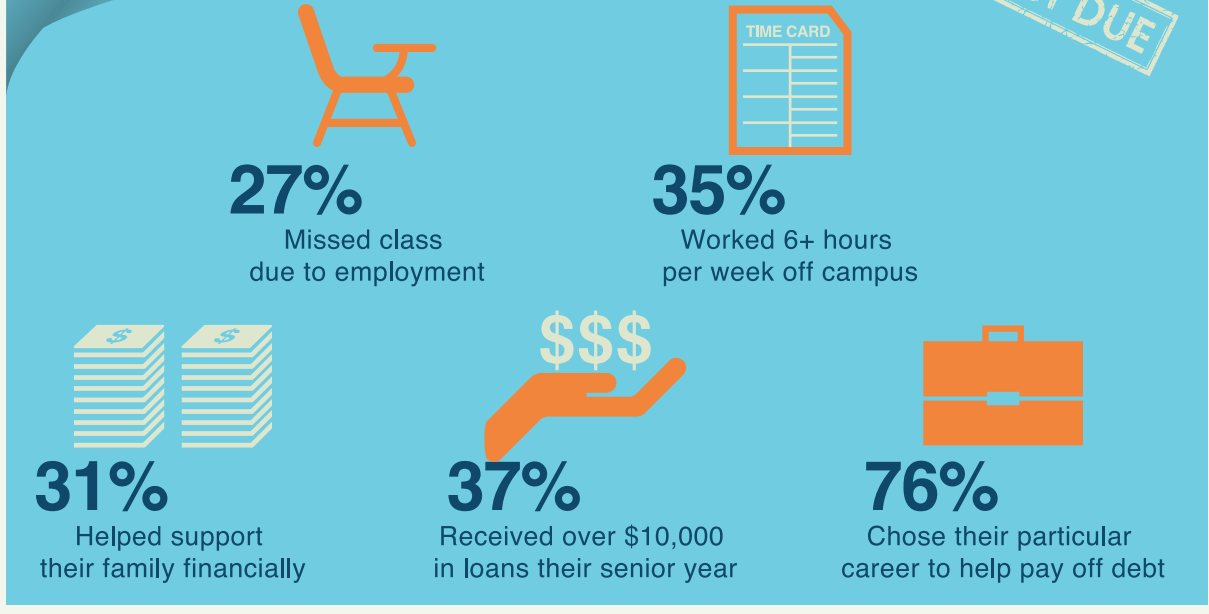
results are shown in GRAY & WHITE

Today's college seniors embrace diversity and are eager to share their voice with their community. Whether it's graduate school or employment opportunities, the Class of 2015 is ready to take the next step.

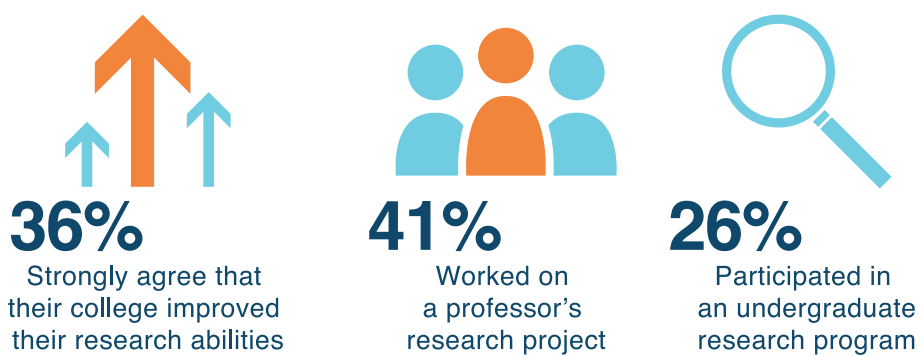
Seniors are looking forward towards their careers...



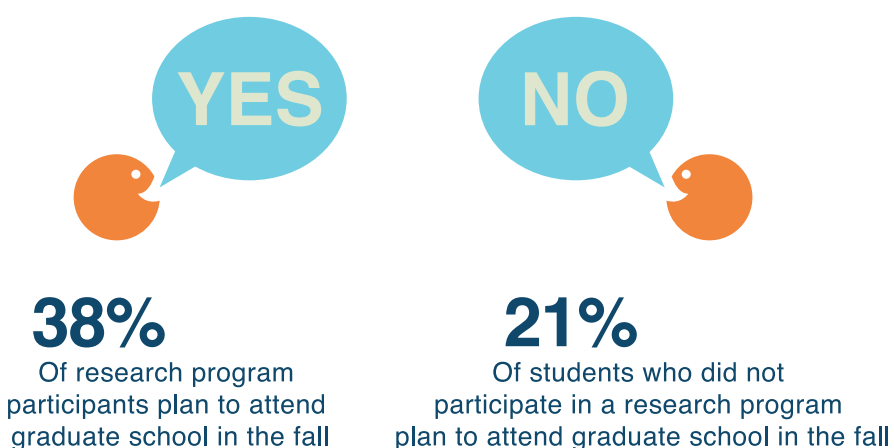
...Though financial pressures may influence their plans.



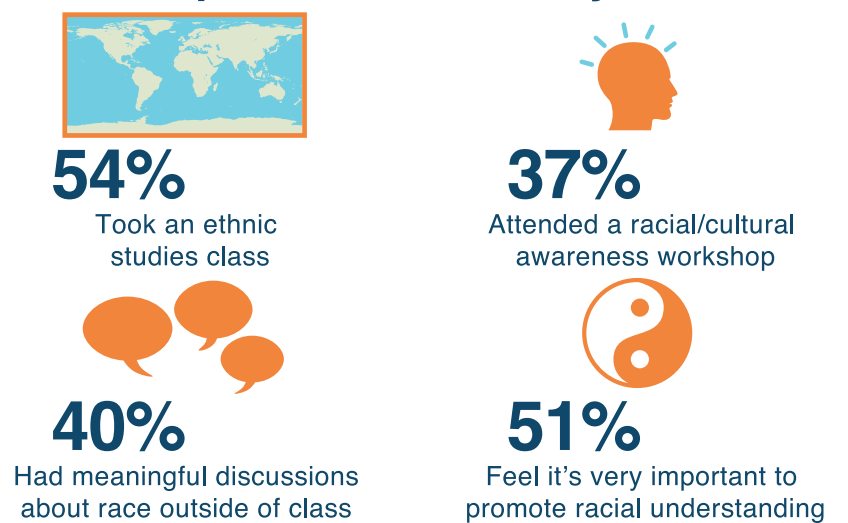
Research programs provide a chance to enhance knowledge and networks...



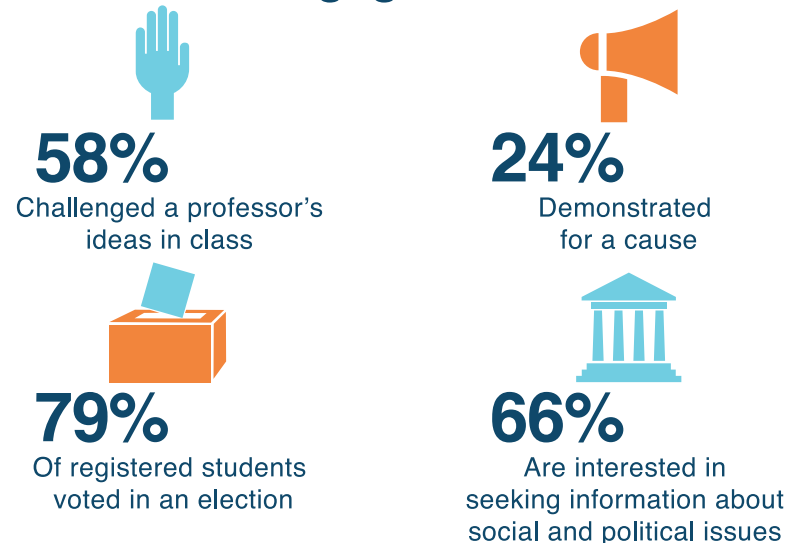
...And are associated with the likelihood of pursuing graduate school opportunities.



The college experience promotes diversity...



...And helps transform students into engaged citizens.



The College Senior Survey (CSS) connects academic, civic, and diversity outcomes with a comprehensive set of college experiences to measure the impact of college. When used as a follow-up instrument to other CIRP surveys, such as the Freshman Survey (TFS) or the Your First College Year (YFCY) Survey, the CSS generates valuable longitudinal data on students' cognitive and affective growth as they graduate from college.

Survey Source: CIRP College Senior Survey 2015

www.heri.ucla.edu

[facebook.com/HERI.CIRP](https://www.facebook.com/HERI.CIRP)

[@HERIUCLA](https://twitter.com/HERIUCLA)